

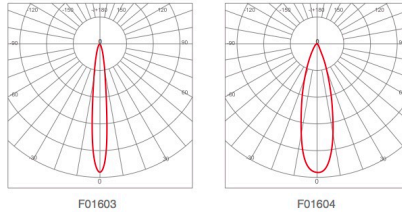
## HIM, the Outperformer

- High performance design with Nichia Chip
- Luminous flux up to 99,000lm (900W)
- Luminous Efficacy up to 110lm/W
- Electricity: 100-240Vac/100-277Vac, 50/60Hz, PF $\geq$ 0.93
- LED Lifespan > 50,000 hours (Ta=30°C@L70)
- Energy saving up to 90%
- CCT : 5000K (3000K & 4000K optional)
- CRI > Ra70 (CRI>Ra80 optional)
- Beam angle : 18°, 30° optional
- IK08
- Built-in SPD, 10KV surge protection
- Superior uniformity
- Superior temperature stability
- Temperature test at toughest conditions
- Inventronics driver
- Operating temp: -30~+50°C
- Body: Aluminum alloy
- Multiple modules allowing 40deg rotation  
Single module allowing 70deg rotation
- Stainless steel screws
- IP66 protection rating
- 5 years warranty

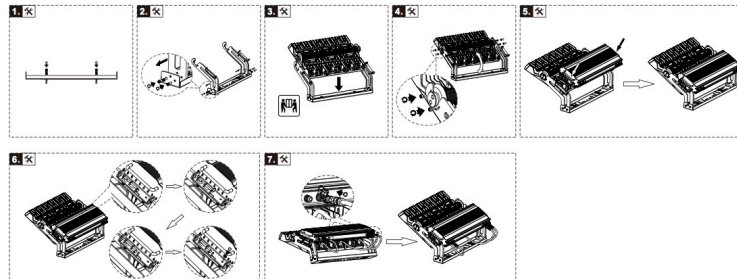
## HIM Product Range

Part Number	FL06-600	FL06-900
Lumen Output	6,600lm	9,900lm
Wattage	600W	900W
Luminous Efficacy	110lm/W	
CCT	3000K, 4000K, 5000K	
CRI	>Ra70, >Ra80	
Beam Angle	18°, 30°	
Input Voltage	100-240Vac/100-277Vac 50-60hz PF $\geq$ 0.93	
IP Rating	IP66	
LED Driver	Inventronics	
HID Equivalent	900W	1200W
Certification Pending	CE, RoHS	

## Photometric Diagrams



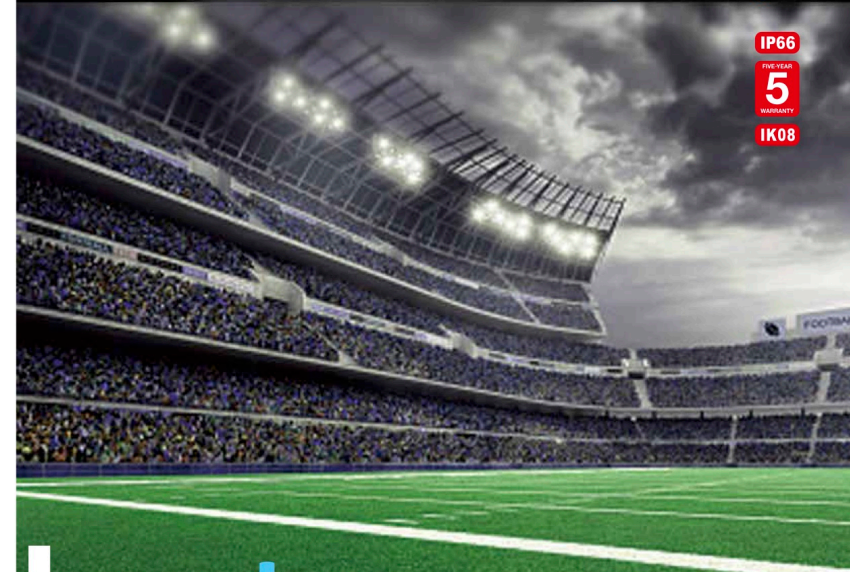
## Mounting Options



LUZON LIGHTING  
1945 B STREET SUITE A - SAN DIEGO - CA - 92102  
Ph: 619 878 2730  
sales@luzonlighting.com  
www.luzonlighting.com



**LUZON LED HIM**  
Humanized Design LED Floodlight



IP66  
5 YEAR WARRANTY  
IK08

ISO9001: 2008

ALL INFO HERE ONLY FOR REFERENCE, PLEASE CONFIRM WITH OUR SALES BEFORE ORDER.

**luzon**  
lighting™

# HIM

High-power LED Modular Floodlight



HIM is High Power LED modular Floodlight with 600W and 900W available. It is humanized design in details: (1) Easy Assembly and Quick Connection between Parts; (2) Angle Adjustability for LED Modules.

## LED Module

The LED modules are connected by a rotation axle, which makes each module have a 70° rotating range, while the multiple (entire) modules having a 40° one. This convenient and humanized design makes HIM meet different requests in outdoor lighting applications.



## Wind Test Certified & 10KV Surge Protection

The overall structure of HIM is firm, which has passed the windproof test at 30m height. And the LED driver inside comes with a 10kV SPD (surge protection device), which provides double protection in bad weather.

## Small Beam Angle & High Efficacy

HIM adopts small beam angle optics (18° and 30°). And with the high efficacy 110lm/W, it can reach a quite far target lighting area as wished.

## High Power Consumption but High Lumen Output

HIM has two power watts options, 600W and 900W. The 600W would get a 66,000lm lumen output, while 900W getting 99,000lm. They are designed to replace 900W and 1200W MH/HID respectively.

## IP66 & IK08

HIM comes with a waterproof rubber ring inside. And its well-designed radiating fins help air to flow and prevent water to accumulate. Each LED module is equipped with a respirator, preventing water to spray in.

Additionally, HIM gets a IK08 impact-resistant grade, which provides better protection for outdoor usage.

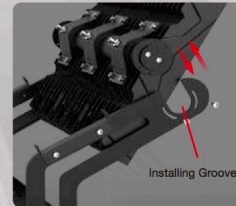


## Humanized Design, Easy and Quick Assembly/Disassembly

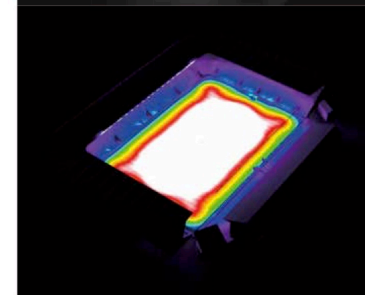
### 1. Driver Box Assembling



### 2. LED Module Assembling



## HIM Dialux Simulation



## High-density Waterproof Cable Connector

The LED Modules and Driver Box are connected with high-density waterproof cable connectors, and which can be plugged in and pulled out quickly and safely.

