



Technical Application Guide for  
LED Pendant Linear  
DB08-1200-40W

# Introduction



The design of batten realizes low cost, simple construction and superior capability, milky PC diffuser achieves anti-glare and high light transmittance. It is made of high lumen 2835SMD led chip, energy saving, instant start, no flickering, no noise & UV/IR radiation, environmental friendly without Mercury or any other hazardous substances. It is a high efficient and low cost product with quite large potential market. Ideal replacement for various applications such as workshop, warehouse, exhibition hall, factory, shop, supermarket etc.

- Aluminum components generate a rust-free product for less maintenance
- Up to 70% energy saving compared to standard CFL
- Environment friendly, without Mercury or any other hazardous substances

## Application notes

- IP20 for indoor use only
- The lamp must be installed by professional electrician
- Ensure the power supply is switched off before fitting this product
- Do not touch the lamp when in use
- Keep away from hot steam and corrosive gas

## Application Areas

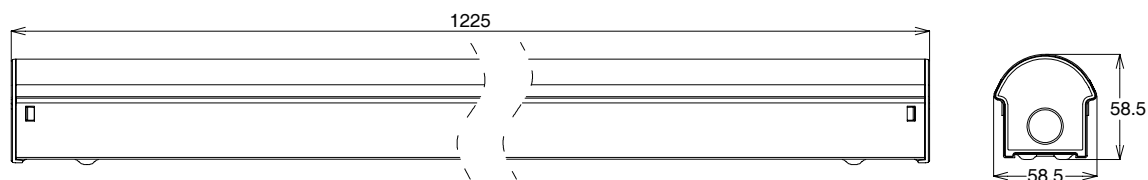
Widely used in office, meeting room, hotel, school etc.

## Certificate

CE RoHS SAA



# Product Information



## Technical Specifications

Model	Voltage	Power	Power Factor	Lumen (±5%)	Beam angle	CCT	Lifespan	CRI	Dimmable	Dimension
DB08-1200-40W	AC100-277V	40W	≥0.9	3760	120°	3000K	40000h	≥80	No	L1225*W58.5*H58.5mm
DB08-1200-40W	AC100-277V	40W	≥0.9	3960	120°	4000K	40000h	≥80	No	L1225*W58.5*H58.5mm
DB08-1200-40W	AC100-277V	40W	≥0.9	3880	120°	5000K	40000h	≥80	No	L1225*W58.5*H58.5mm
DB08-1200-40W	AC100-277V	40W	≥0.9	3800	120°	5700K	40000h	≥80	No	L1225*W58.5*H58.5mm

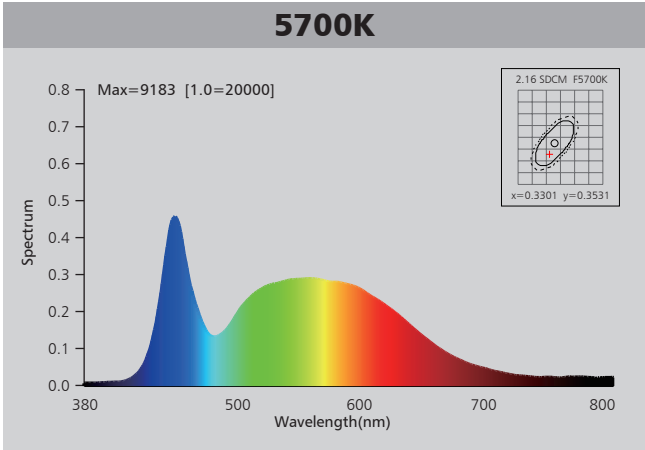
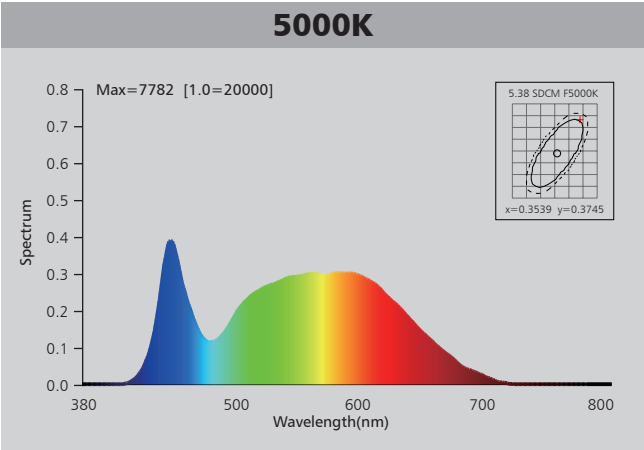
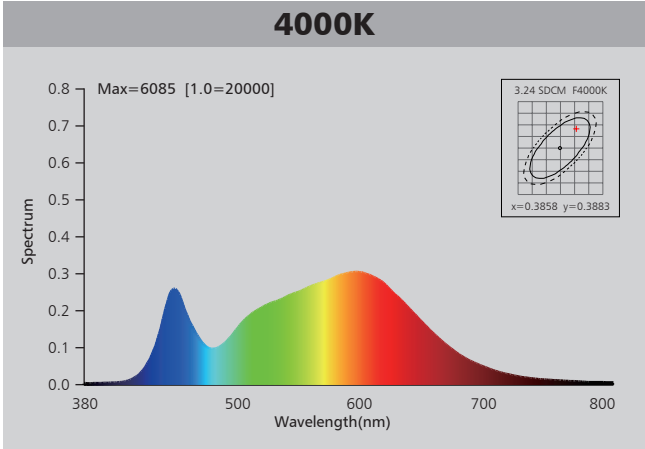
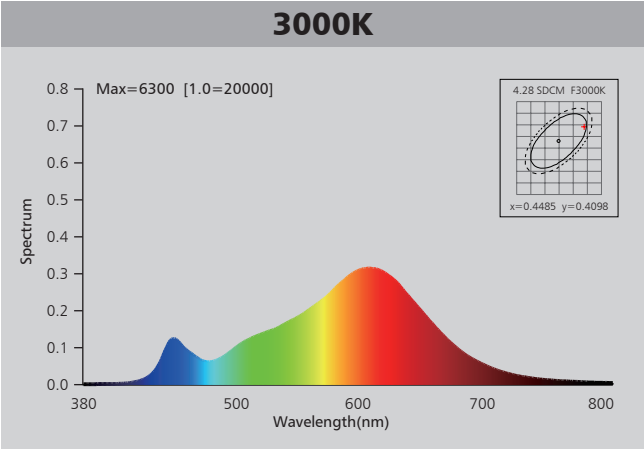
## Driver data Sheet

Driver data	Main Power
Input rated Voltage	AC100-277V
Frequency	50/60Hz
Input Voltage	AC90-305V
Efficiency	≥88%
No load wattage	≤0.5W
Total load Wattage	40W±5%
Power Factor	≥0.93
Rated input current	≤0.45A
Full load output Voltage	60-75V
Rated output current	560mA
Output current range	560mA±5%
Power tolerance	±5%
Current output tolerance	±5%
Short circuit protection	PASS
Over voltage protection	PASS
Over temperature protection	PASS
THD	<20%
Withstand voltage	AC1500V

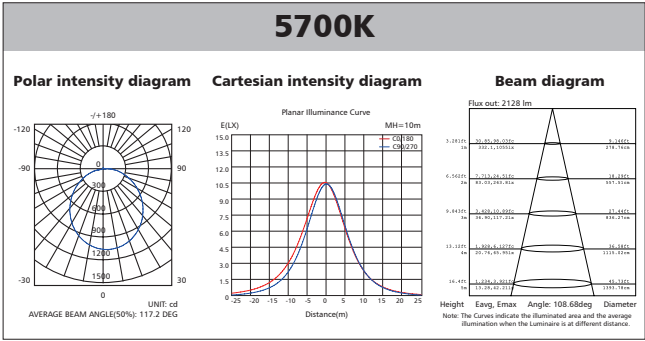
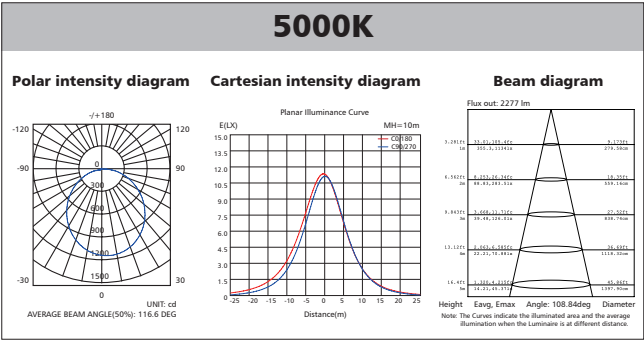
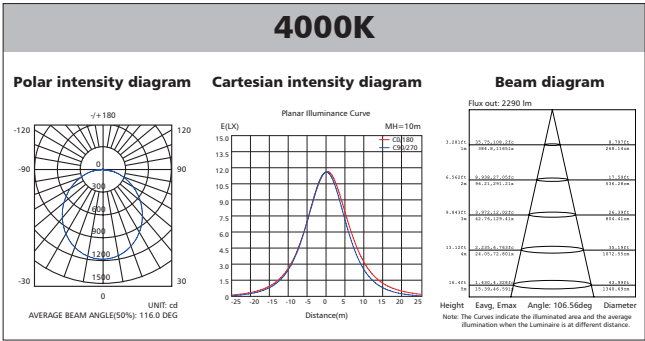
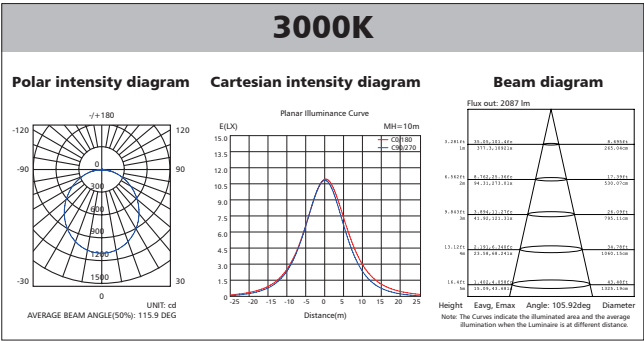
## Fixture Compatibility

Rated Wattage	Electrical Classification	Ingress Protection	Operating Temp	Operating Humidity	Storage Temp
40W	I	IP20	-20°C~45°C	0~90%	-20°C~65°C

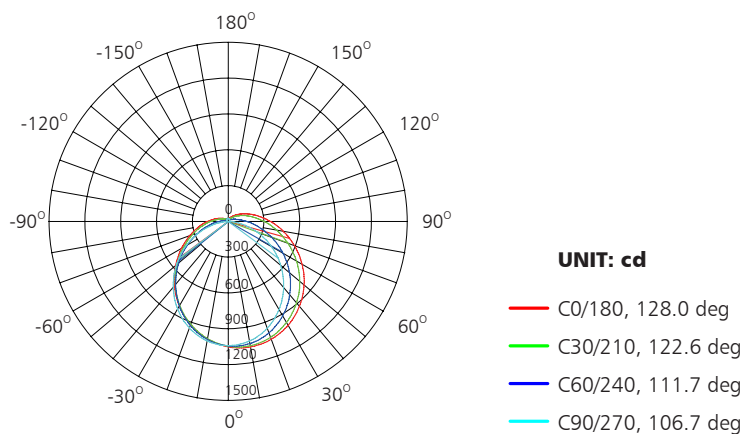
# Spectral Distribution



# Photometric Diagram



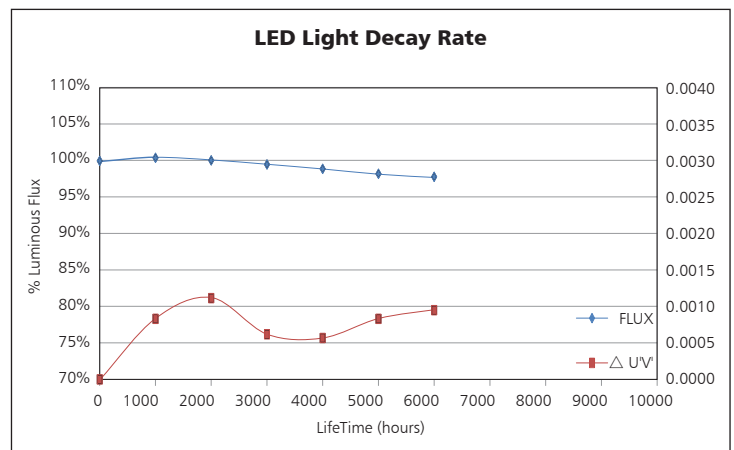
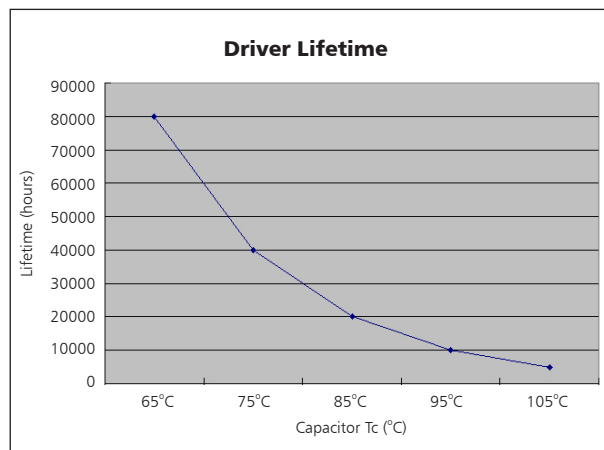
## Polar Diagram Comparison



AVERAGE BEAM ANGLE (50%): 117.2DEG

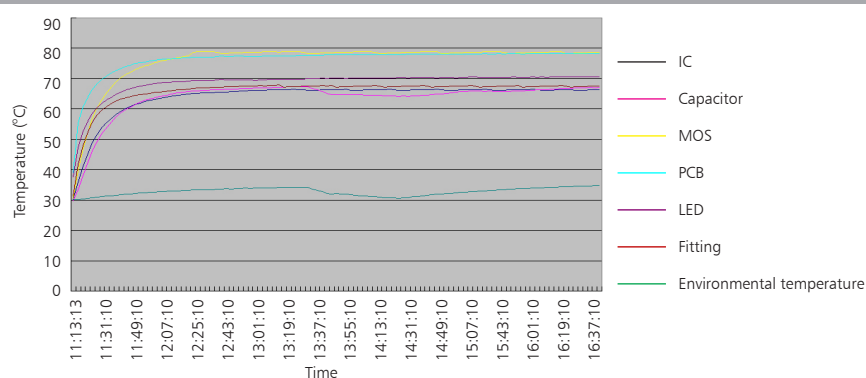


## Driver lifetime & LED light decay rate



## Temperature

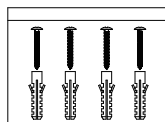
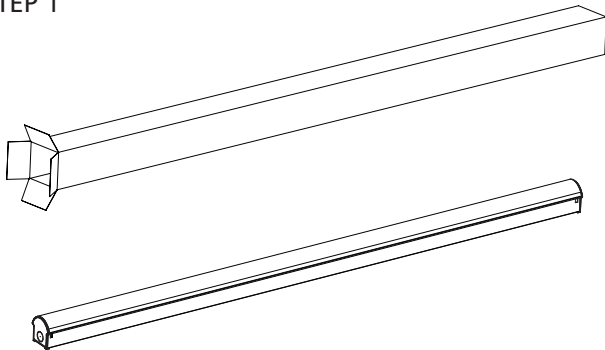
- The testing is operated at 25°C
- The lifetime of capacitor, minimum of 5,000 hours if operated at 105°C, will be doubled whenever the temperature drops 10°C
- The highest withstand temperature of IC, MOS could be 120°C
- The highest withstand temperature of LED junction temperature is 150°C



The driver lifespan is based on capacitor working temperature.

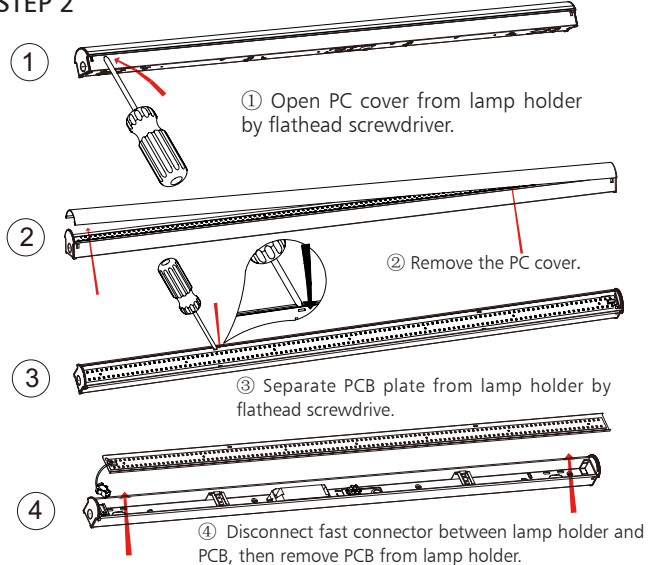
# Installation 1

## STEP 1

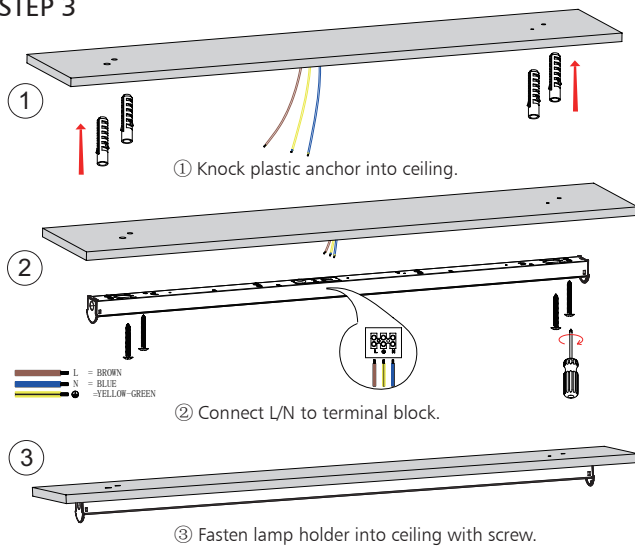


Open the packing and take out the lamp

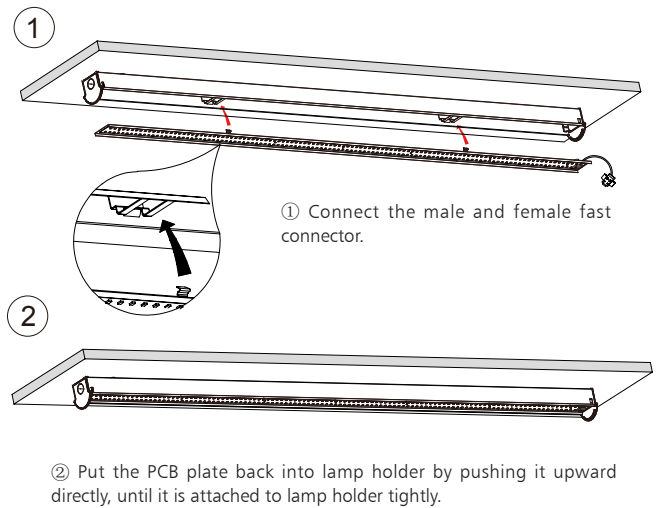
## STEP 2



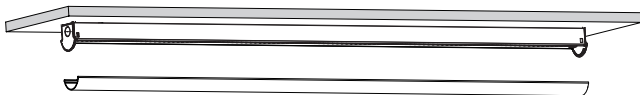
## STEP 3



## STEP 4

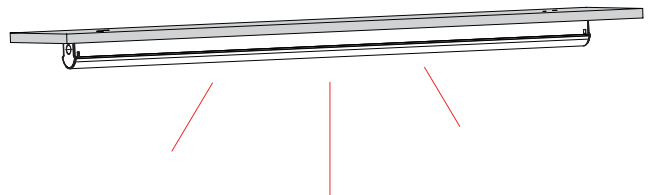


## STEP 5

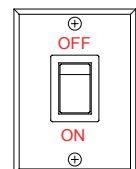


Pushing PC cover back to lamp holder by hands, until it is firmly fixed.

## STEP 6

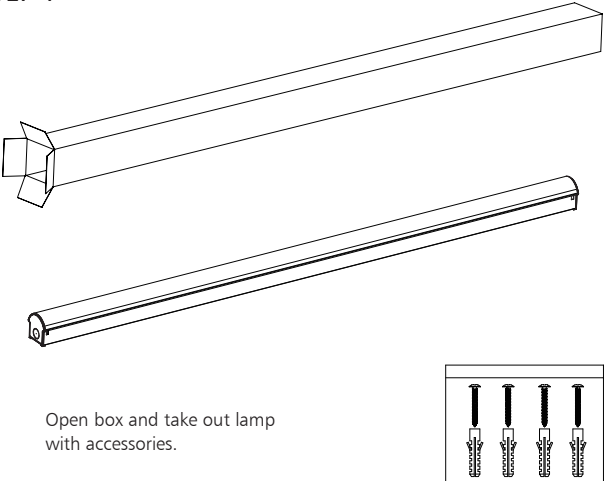


Restore mains power and switch on for correct operation.



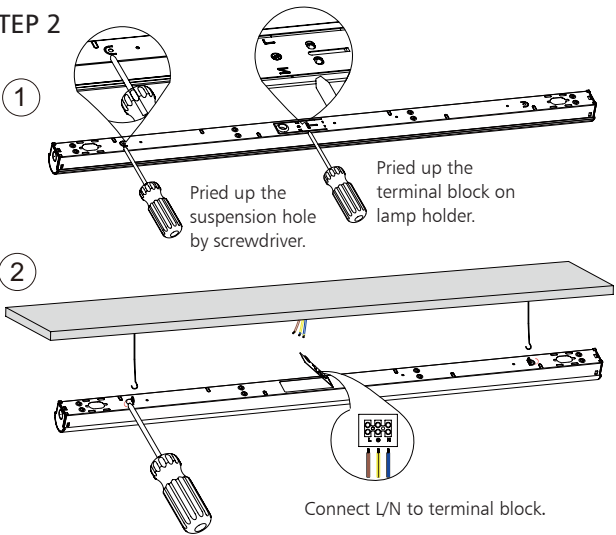
# Installation 2

STEP 1



Open box and take out lamp with accessories.

STEP 2

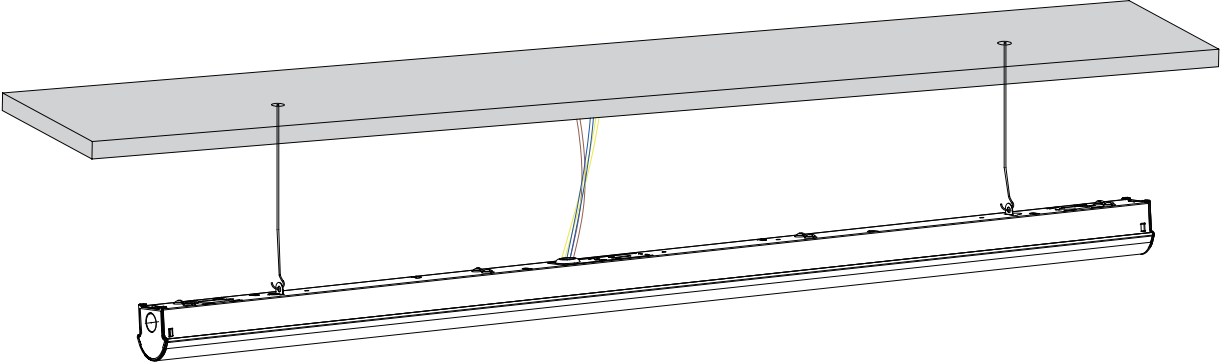


1 Pried up the suspension hole by screwdriver.

2 Pried up the terminal block on lamp holder.

Connect L/N to terminal block.

STEP 3



Hang fixture to ceiling with hanging wire.

## Packaging Information

	SIZE(CM)	N.W/pc (KGS)	G.W.(KGS)	Q'TY(PCS)		CTNS	Q'TY(PCS)	VOLUME(CBM)
Carton	129.5*34.5*15.5	1.5	18	10	20" standard container	398	3980	28
					40" standard container	796	7960	56

