

Entry /ECO

Standard /STD

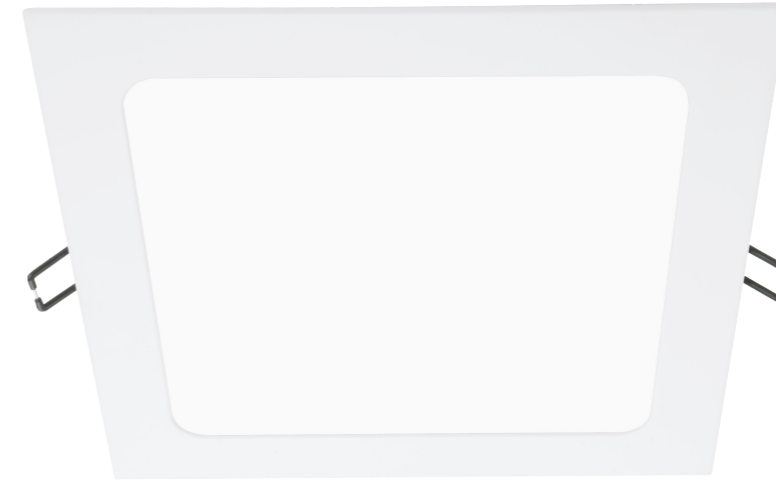
Professional/PRO

ODM & OEM

Intelligent/INT



ECO
Specifications



LED Panel Light
PL-DD Series

luzon
lighting™



Introduction

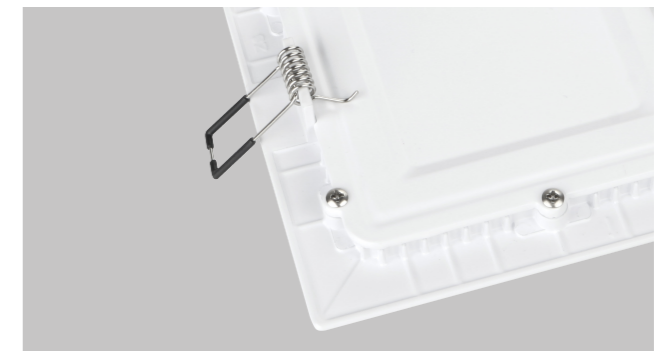
Super Slim panel with complete diameter options. 2835SMD LED chip and PMMA LGP offer a great light transmittance and light output. Adopt die-casting aluminum frame which provides a great thermal management. External driver comes with triac dim, it shares great popularity by perfect dimming range and great compatibility with worldwide dimmers. The ultra slim profile fits perfectly for all working places.

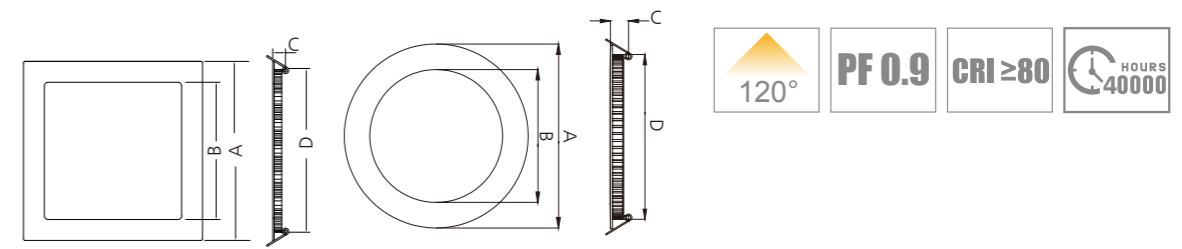
Features

- Super slim design.
- Interchangeable CCT (3000/4000/5700k) with slide switch.
- Anti-Leakage Excellent Appearance.
- Triac/0-10v/Dali dimming.
- External driver.

Application Areas

Widely used for various commercial lighting and residential lighting applications, such as offices, shopping mall, hotel, restaurant, hospital, home lighting etc.





Measurement

Code	Dimension(mm)				Size(mm)	Product Weight (Kg)		Package weight (Kg)		Carton Size(cm)	Qty/CTN	20GP (pcs)	40HQ (pcs)
	A	B	C	D		N.W/PC	G.W/PC	N.W/CTN	G.W/CTN				
1212	120	76	21	103	120*120*21	0.24	0.39	8.5	14.6	60*27*27	36	22752	52164
1515	146	93	21	125	146*146*21	0.28	0.45	6.7	11.3	45.5*27*27	24	20352	46440
1717	171	124	21	153	171*171*21	0.34	0.52	7.4	11.0	45*25.5*37	20	13440	32060
2222	224	173	21	203	224*224*21	0.52	0.73	6.3	9.3	53.5*31*25	12	8208	18720
3030	300	247	21	275	300*300*21	0.88	1.1	10.6	13.8	53.5*37.5*32.5	12	5376	11088
1221	120	80	21	106	Ø120*21	0.2	0.34	7.2	12.6	52.5*27*27	36	25344	58320
1521	145	95	21	125	Ø145*21	0.24	0.4	5.8	10.1	40.5*27*32	24	19992	46464
1721	170	127	21	155	Ø170*21	0.29	0.47	5.8	9.6	45*23*37	20	14520	35140
2221	224	173	21	203	Ø224*21	0.42	0.63	5.1	8.3	53.5*28.5*25	12	8964	20640
3021	300	252	21	280	Ø300*21	0.71	0.98	8.5	12.5	53.5*36*32.5	12	5376	11088

Technical Data Sheet

Code No.	PL1212-7W-DD	PL1515-9W-DD	PL1717-12W-DD	PL2222-18W-DD	PL3030-24W-DD	PL1221-7W-DD	PL1521-9W-DD	PL1721-12W-DD	PL2221-18W-DD	PL3021-24W-DD		
Dimension(mm)	120*120*21	146*146*21	171*171*21	224*224*21	300*300*21	Ø120*21	Ø145*21	Ø170*21	Ø224*21	Ø300*21		
Cutout (mm)	105*105(+5)	127*127(+5)	155*155(+5)	205*205(+5)	277*277(+5)	Ø108~113	Ø127~133	Ø157~162	Ø205~212	Ø282~288		
Watt(W)	7W	9W	12W	18W	24W	7W	9W	12W	18W	24W		
Rated Input Voltage(V)	AC230V											
Input Voltage(V)	AC200-240V											
LED Module Input	30-35VDC 180MA CC	33-38VDC 230MA CC	33-38VDC 300MA CC	33-38VDC 450MA CC	33-38VDC 600MA CC	30-35VDC 180MA CC	33-38VDC 230MA CC	33-38VDC 300MA CC	33-38VDC 450MA CC	33-38VDC 600MA CC		
Light Source	SMD											
SDCM	< 6											
CCT(K)	1-CCT: 3000K/4000K/5000K/5700K/6500K 3-CCT: 3000K+4000K+5700K											
CCT Selection DIP Switch	Yes											
Luminous Flux (lm) ±5%	Non-DIM	1-CCT	455-525	650-750	850-950	1350-1500	1820-2000	455-525	650-750	850-950	1350-1500	1800-2000
			DIM	430-500	620-710	810-900	1280-1420	1620-1800	430-500	620-710	810-900	1280-1420
	Non-DIM	3-CCT	445-515	640-690	830-870	1320-1380	1780-1840	445-515	640-690	830-870	1320-1380	1780-1840
			DIM	430-500	600-680	780-850	1240-1340	1670-1780	430-500	600-680	780-850	1240-1340
CRI	≥ 80											
Beam Angle (°)	120°											
UGR	-											
LED Driver	Built-out											
Dimming Option	Triac /0-10v /Dali dimming											
Sensor	-											
Emergency Kits	-											
Electrical Class	Class II											
Ingress Protection (IP Rating)	IP20											
Impact Resistance (IK Rating)	-											
Product Finishing(Base)	White RAL9016											
Materials of Optics	PS(Diffuser)+PMMA(LGP)											
Materials of Housing	Aluminum(Frame)											
Lifetime (hr)	40,000h											
Glow wire test (°C)	650°C											
Operating Temp. (°C)	-20°C ~45°C											
Storage Temp. (°C)	-20°C ~65°C											
Installation	recessed											

Driver Datasheet (Non-dimmable)

Total load wattage		7W	9W	12W	18W	24W
Output	Output Voltage range	DC30-40V	DC30-40V	DC30-40V	DC30-40V	DC30-40V
	Rated output current	180mA	230mA	300mA	450mA	600mA
	Line Regulation	±5%				
	Setup, Rise Time	≤1S				
Input	Flickering Index	-				
	Input Voltage	AC200-240V				
	Rated Input Voltage(V)	AC230V				
	Frequency	50/60Hz				
	Input Current	≤0.044A	≤0.056A	≤0.074A	≤0.12A	≤0.15A
	Rated Input Current	≤0.039A	≤0.05A	≤0.067A	≤0.1A	≤0.13A
	Power Factor	≥0.8	≥0.9	≥0.9	≥0.9	≥0.9
	THD	<20% @230V				
	Efficiency	≥86%	≥88%	≥88%	≥88%	≥88%
	No load wattage	<0.5W				
	Protection	Short circuit protection	Pass			
Over voltage protection		Pass				
Over temperature protection		Pass				
Safety & EMC	Withstand voltage	I/P-O/P:3.75KVac, <5mA 60S				
	Isolation Resistance	I/P-O/P: 500VDC, ≥100M Ω				
	Surge	IEC61000-4-5(L-N:0.5KV)				
	EMC Emission	EN55015, EN61000-3-2				
EMC Immunity	EN61000-4-2,3,4,5,6,8,11; EN61547					

Driver Datasheet (Triac Dimmable)

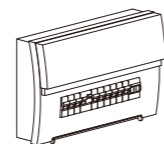
Total load wattage		7W	9W	12W	18W	24W
Output	Output Voltage range	DC30-40V	DC30-40V	DC30-40V	DC30-40V	DC30-40V
	Rated output current	180mA	200mA	280mA	450mA	550mA
	Line Regulation	±5%				
	Setup, Rise Time	≤1S				
	Flickering Index	-				
Input	Input Voltage	AC200-240V				
	Rated Input Voltage(V)	AC230V				
	Frequency	50Hz				
	Input Current	≤0.044A	≤0.056A	≤0.074A	≤0.12A	≤0.15A
	Rated Input Current	≤0.039A	≤0.05A	≤0.067A	≤0.1A	≤0.13A
	Power Factor	≥0.8	≥0.9	≥0.9	≥0.9	≥0.9
	THD	<20% @230V				
	Efficiency	≥80%	≥80%	≥80%	≥83%	≥83%
	No load wattage	<1W				
	Protection	Short circuit protection	Pass			
Over voltage protection		Pass				
Over temperature protection		Pass				
Safety &EMC	Withstand voltage	I/P-O/P:3.75KVac, <5mA 60S				
	Isolation Resistance	I/P-O/P: 500VDC, ≥100M Ω				
	Surge	IEC61000-4-5(L-N:0.5KV)				
	EMC Emission	EN55015, EN61000-3-2				
	EMC Immunity	EN61000-4-2,3,4,5,6,8,11; EN61547				

Installation Procedure

WARNING ⚡

1. Switch off before installation.
2. Switch on only after complete installation and examination of the circuit.
3. Professional electrician for installation and maintenance only.

Turn Off power supply before starting any installation. Read instructions & check you have all the tools & accessories to complete the installation correctly.



Turn Off Power Supply

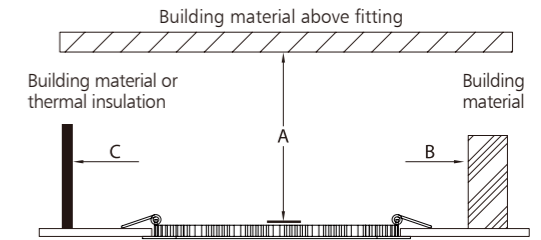
For color changeable model (controlled by Slide Switch in lamp), please select light color before installation, see below picture.



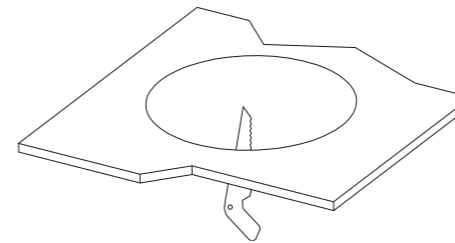
choose color by slide switch with corresponding color temperature.

recessed installation

Install requirements	
A-gap above the fitting	25mm
B-gap to the building material	25mm
C-gap to the thermal insulation	25mm

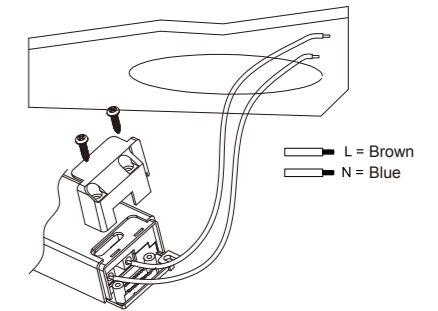


Step 1



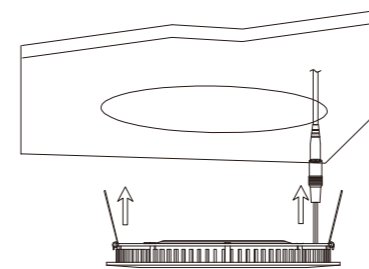
Open a hole according to the cutout size of LED Panel.

Step 2



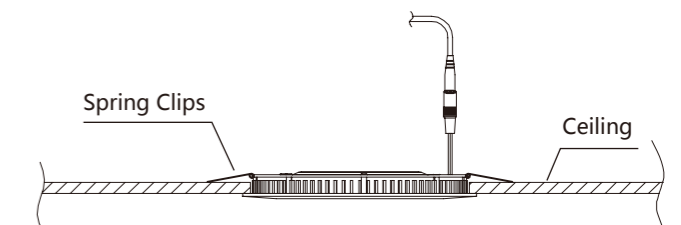
Use screw-driver to open the driver terminal cover, feed the main AC wire L, N, in terminal block respectively, then fix the cover back.

Step 3



Connect the LED Panel with driver, hold back the spring clip then push the LED Panel into the hole.

Step 4



Make sure the LED Panel fixed tightly in ceiling, turn on the power.

ECO
Specifications

STD
Specifications

PRO
Specifications

ODM
Specifications


INT
Intelligent