



LED Downlight
DL301 Series



Introduction

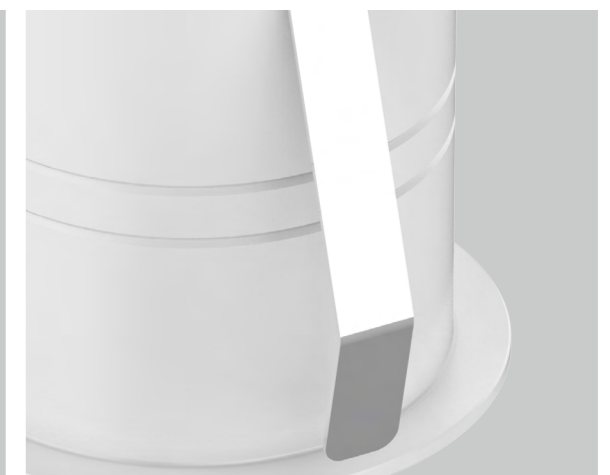
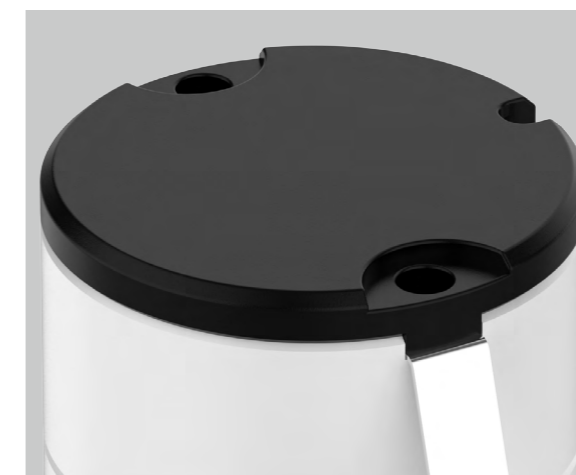
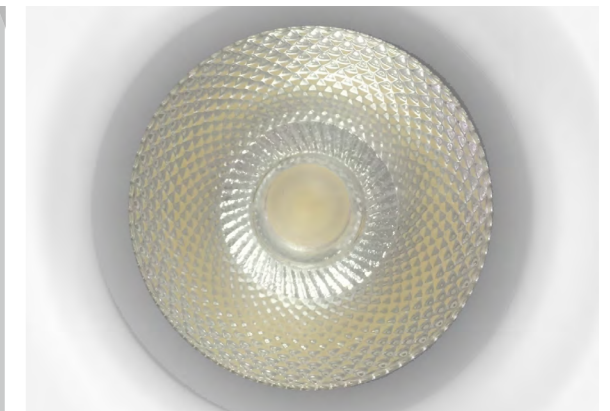
DL301 is a new downlight with small power options: 3W/5W/7W. It adopts high lumen COB chip and high reflectance lens to make sure a high lumen efficiency. Deep lens design reduces glare effectively which can reach UGR<19 effect. 6063 aluminum housing provides an excellent heat dissipation performance. External triac dimmable driver shares great popularity by excellent dimming effect.

Features

- Mini size with small power options:3W/5W/7W.
- Deep lens for anti-glare design, UGR<19.
- AL6063 aluminum housing with great thermal management.
- External flicker free driver.
- Triac dimmable.
- 10% lumen decrease in black color.

Application Areas

Application Areas: It is suitable for specialty store, display cabinet, jewelry cabinet, kitchen cabinet, hotel, home; focus lighting, decorative and background lighting, where attention is focused on subjects to emphasize special visual points.



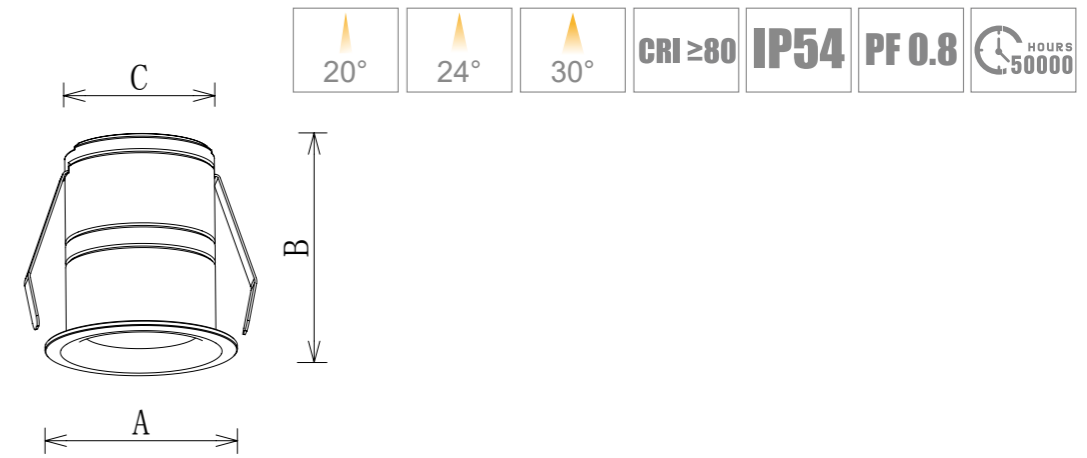


DL301-30-3W-D

DL301-40-5W-D

DL301-50-7W-D

Measurement



Technical Data Sheet

Code No.	DL301-30-3W-D	DL301-40-5W-D	DL301-50-7W-D
Dimension(mm)	Ø35*46	Ø45*49	Ø55*53
Cutout (mm)	30	40	50
Watt(W)	3W	5W	7W
Rated Input Voltage(V)	AC230V		
Input Voltage(V)	AC200-240V		
LED Module Input	15-20V	33-38V	
Light Source	COB		
SDCM	<6		
CCT(K)	1-CCT: 2700K /3000K/4000K/5000K		
CCT Selection DIP Switch	-		
Luminous Flux (lm) ±5%	Non-DIM	-	-
	DIM	150-170	300-350
	10% lumen decrease in black color		
	Non-DIM	-	420-490
	DIM	3-CCT	-
	DIM	-	-
CRI	≥80		
Beam Angle (°)	30°	20°/24°/30°	
UGR	<19		
LED Driver	Built-out		
Dimming Option	Triac		
Sensor	-		
Emergency Kits	-		
Electrical Class	Class II		
Ingress Protection (IP Rating)	IP20 (for other part) / IP54 (only for the LED cover)		
Impact Resistance (IK Rating)	-		
Product Finishing(Base)	White RAL 9016 / Black RAL 9005		
Materials of Optics	PC		
Materials of Housing	AL6063		
Lifetime (hr)	50,000h		
Glow wire test (°C)	750°C		
Operating Temp. (°C)	-20°C ~40°C		
Storage Temp. (°C)	-20°C ~65°C		
Installation	Recessed		

Code	Dimension(mm)			Size(mm)	Product Weight (Kg)		Package weight (Kg)		Carton Size(cm)	Qty/CTN	20GP (pcs)	40HQ (pcs)
	A	B	C		N.W/PC	G.W/PC	N.W/CTN	G.W/CTN				
DL301-30-3W-D	35	46	30	35*46	0.1	0.15	5	9	44.5*23*36.5	48pcs	38160	88368
DL301-40-5W-D	45	49	40	45*48.5	0.13	0.18	6.5	10.5	44.5*23*36.5	48pcs	38160	88368
DL301-50-7W-D	55	53	50	55*53	0.18	0.23	11.5	13	44.5*23*36.5	48pcs	38160	88368

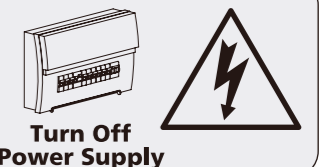
Driver Datasheet (Triac Dimmable)

Total load wattage		3W	5W	7W
Output	Output Voltage range	DC15-20V		DC23-40V
	Rated output current	105mA		140mA
	Line Regulation	±5%		
	Setup, Rise Time	<0.5S		
	Flickering Index	<5%(LOW RISK)		
Input	Input Voltage	AC200-240V		
	Rated Input Voltage(V)	AC230V		
	Frequency	50HZ		
	Input Current	≤0.02A	≤0.03A	≤0.04A
	Rated Input Current	≤0.02A	≤0.03A	≤0.04A
	Power Factor	0.8		
	THD	-		
	Efficiency	≥58%	≥70%	
Protection	No load wattage	<1W		
	Short circuit protection	PASS		
	Over voltage protection	PASS		
Safety &EMC	Over temperature protection	PASS		
	Withstand voltage	-		
	Isolation Resistance	-		
	Surge	IEC/EN61000-4-5(P<25W; L-N:500V);		
EMC Emission	EN55015, EN61000-3-2			
EMC Immunity	EN61000-4-2,3,4,5,6,8,11; EN61547			

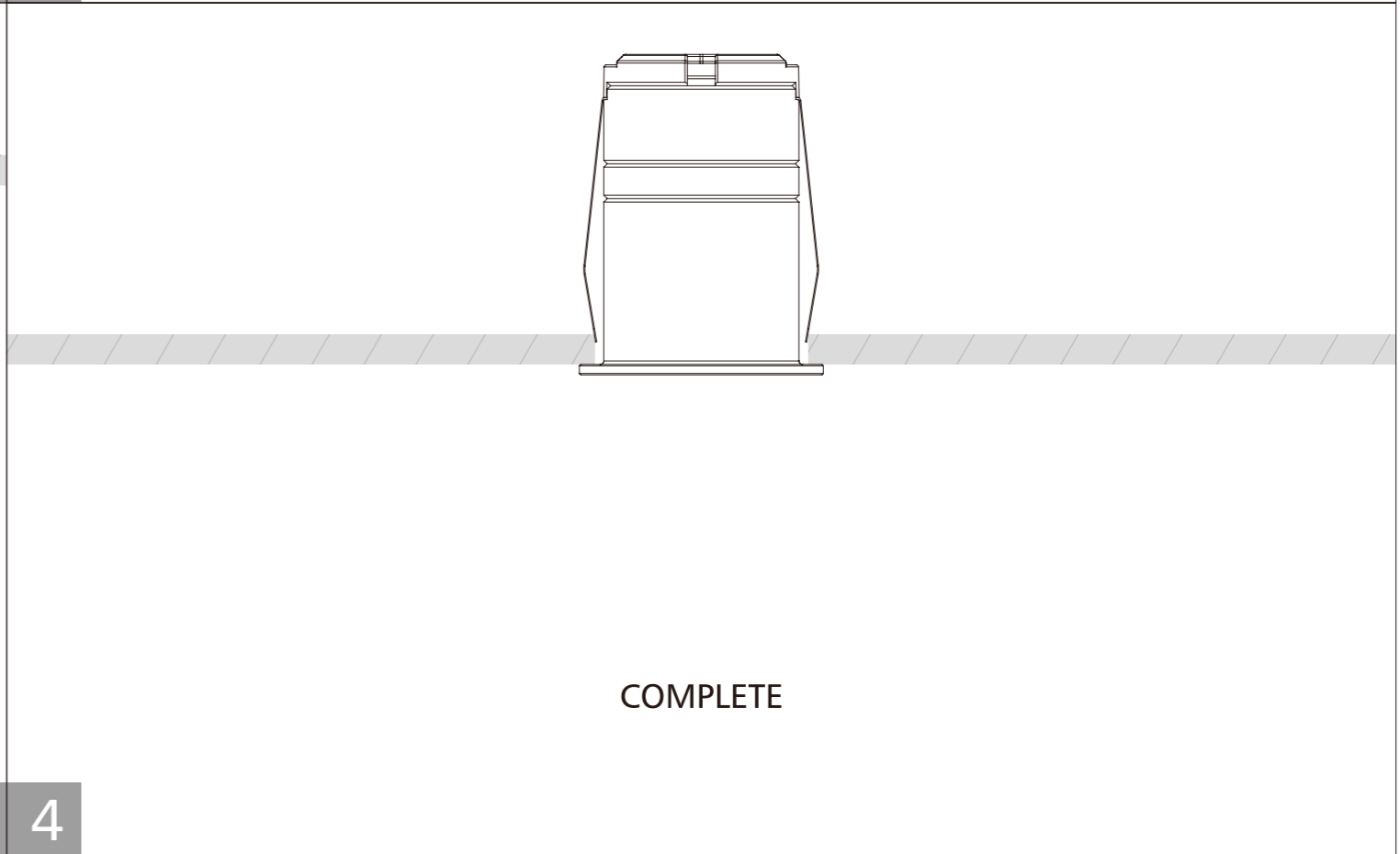
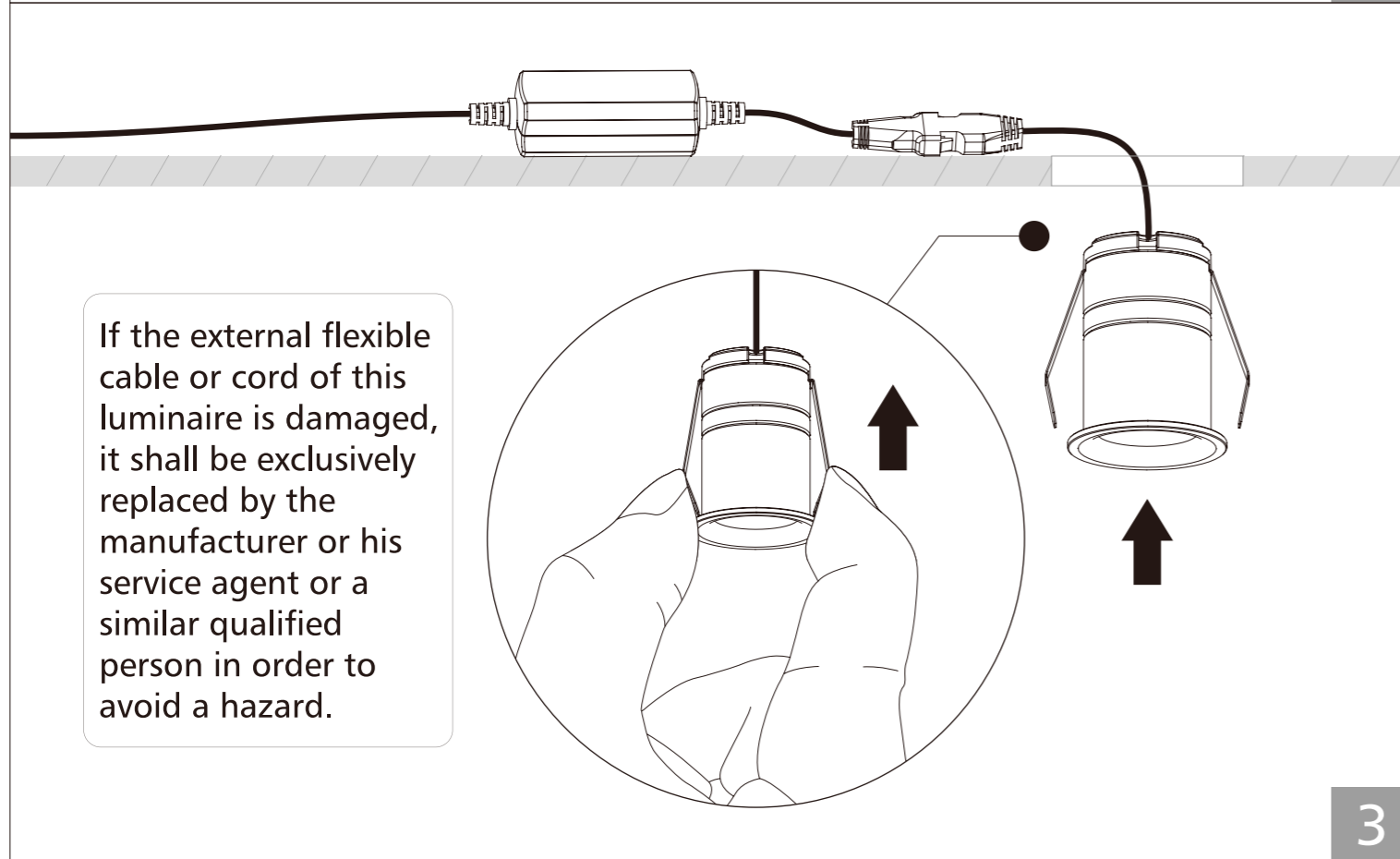
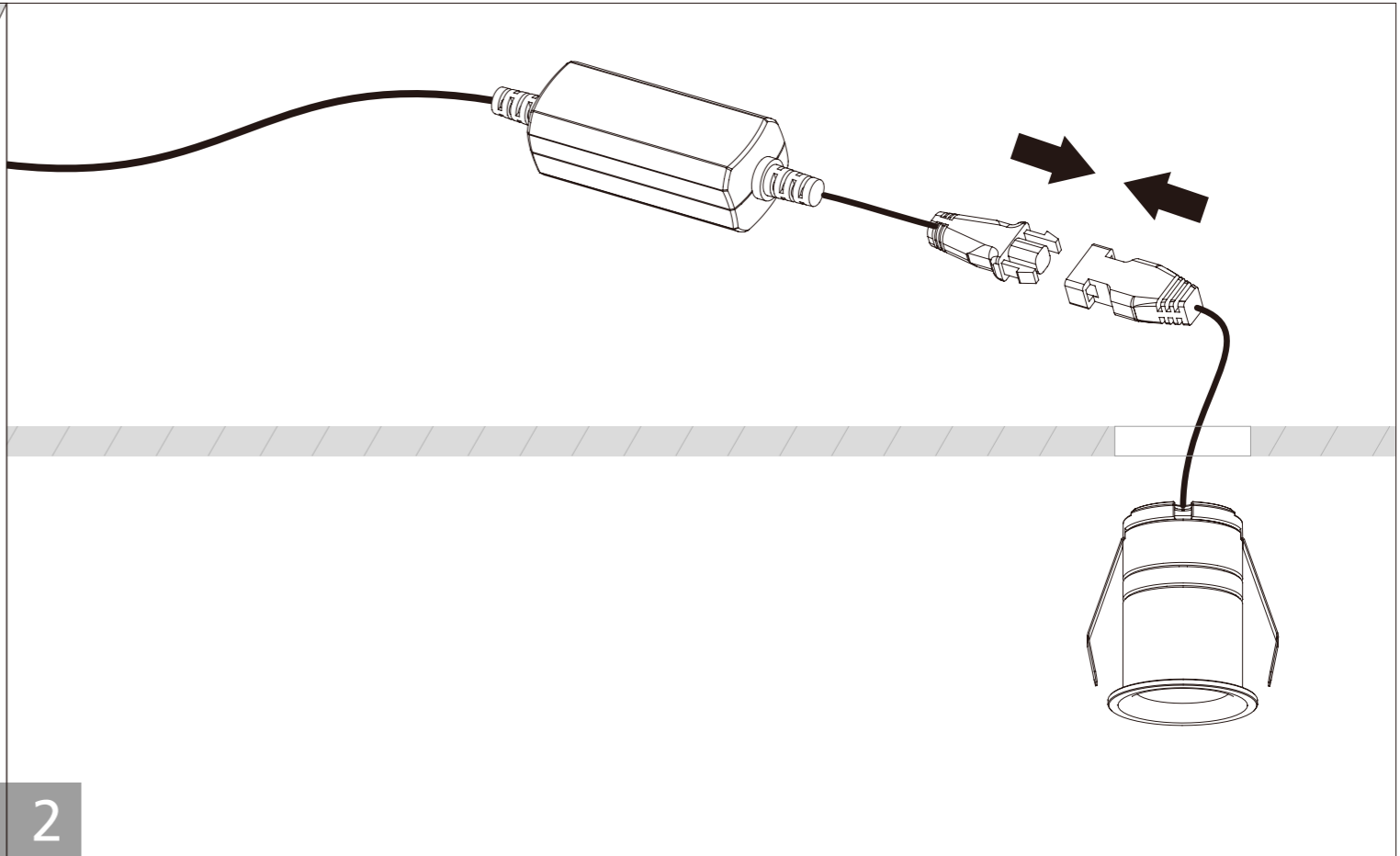
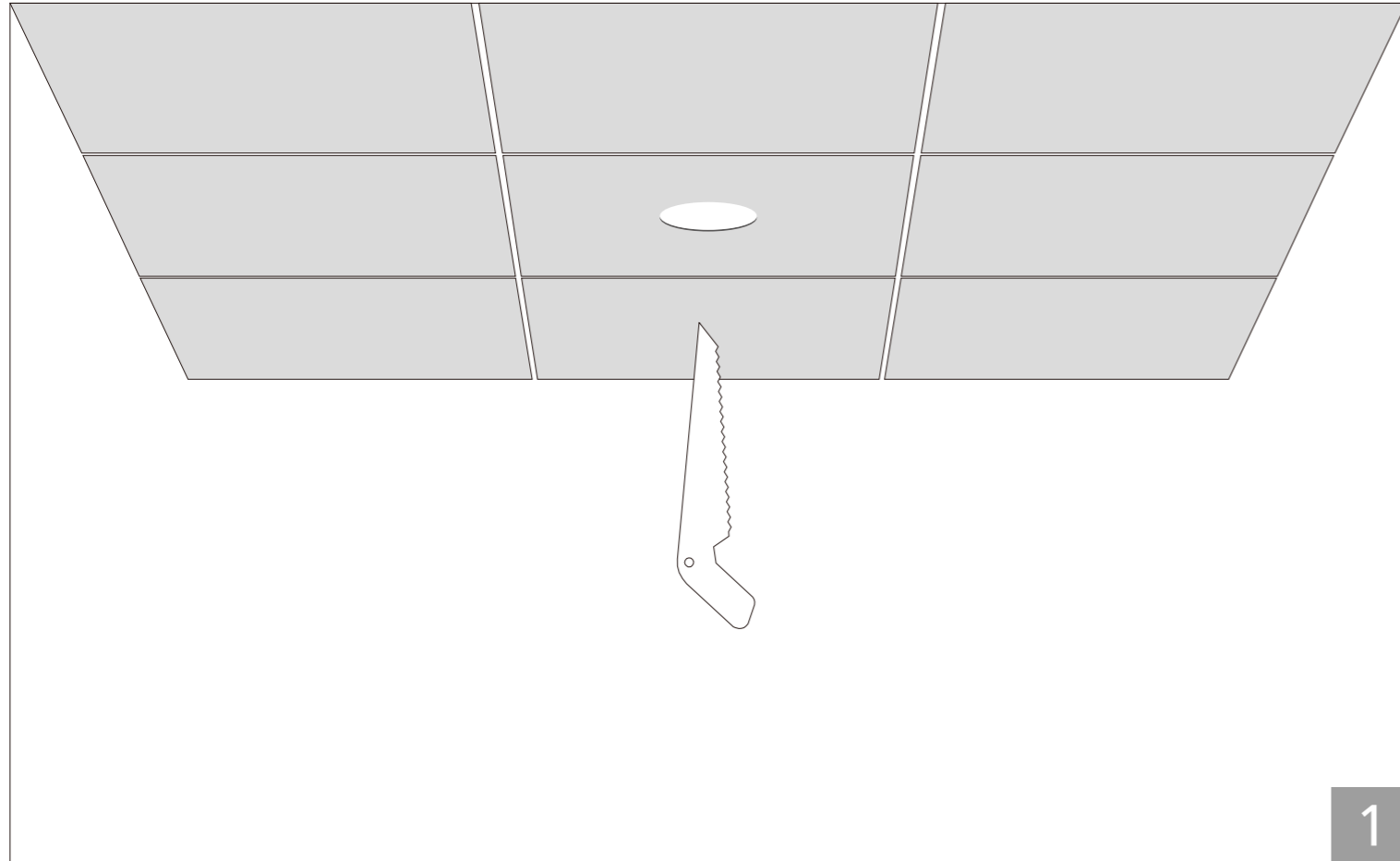
Installation Procedure

WARNING

- 1.Switch off power supply before installation / maitenance.
- 2.Switch on only after complete installation and examination of the circuit.
- 3.Professional electrician for installation and maintenance only.



Recessed



If the external flexible cable or cord of this luminaire is damaged, it shall be exclusively replaced by the manufacturer or his service agent or a similar qualified person in order to avoid a hazard.

ECO
Specifications

STD
Specifications

PRO
Specifications

ODM
Specifications


INT
Intelligent