



LED Downlight  
DL277C Series



## Introduction

This surface mounted down light adopts high lumen chip which make sure the high luminous, 6063 aluminum housing provides excellent thermal dissipation. DL277C also adopts high branded LEDiL-RONDA lens, single asymmetric and double symmetric, 30°/45°/60° WAS Asymmetric ZT45 Symmetric WAS2 Asymmetric six lens optional and replaceable, 360 degree rotation to adjust lighting direction.

## Features

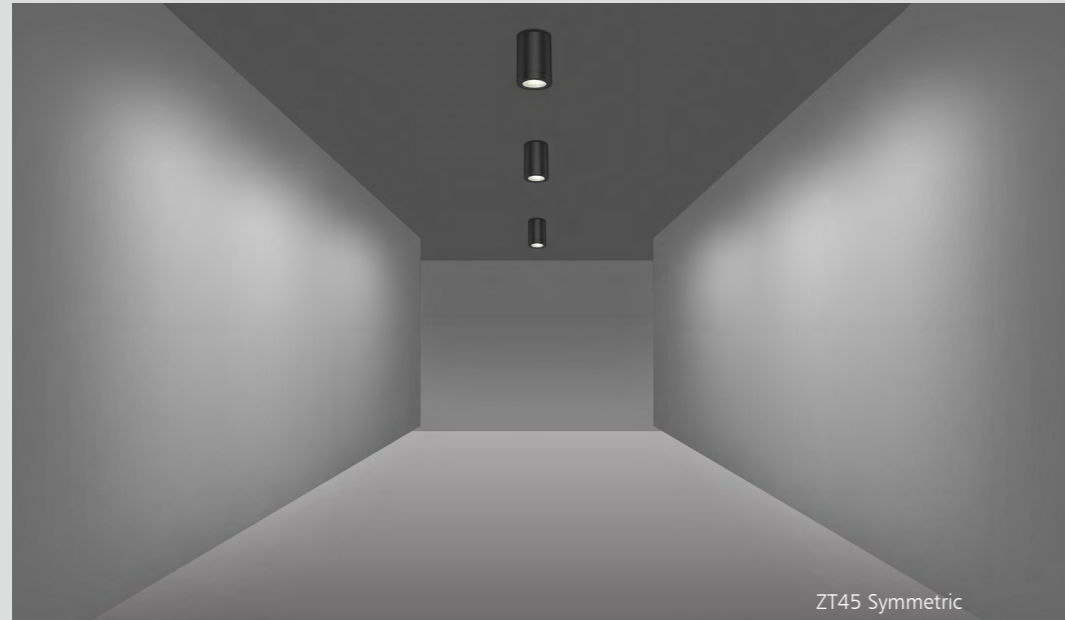
- **Type C:** IP20, adopt LEDiL-RONDA lens, single asymmetric and double asymmetric 6 lens optional and replaceable, 360 degree rotation to adjust lighting direction.
- Internal driver with triac dimming option.
- Easy installation and maintenance.

## Application Areas

It is widely used in Museums, Hotel, Townhouse, Restaurant, Etc



# Polarized Light Display



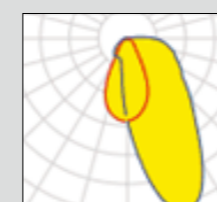
ZT45 Symmetric



WAS Asymmetric



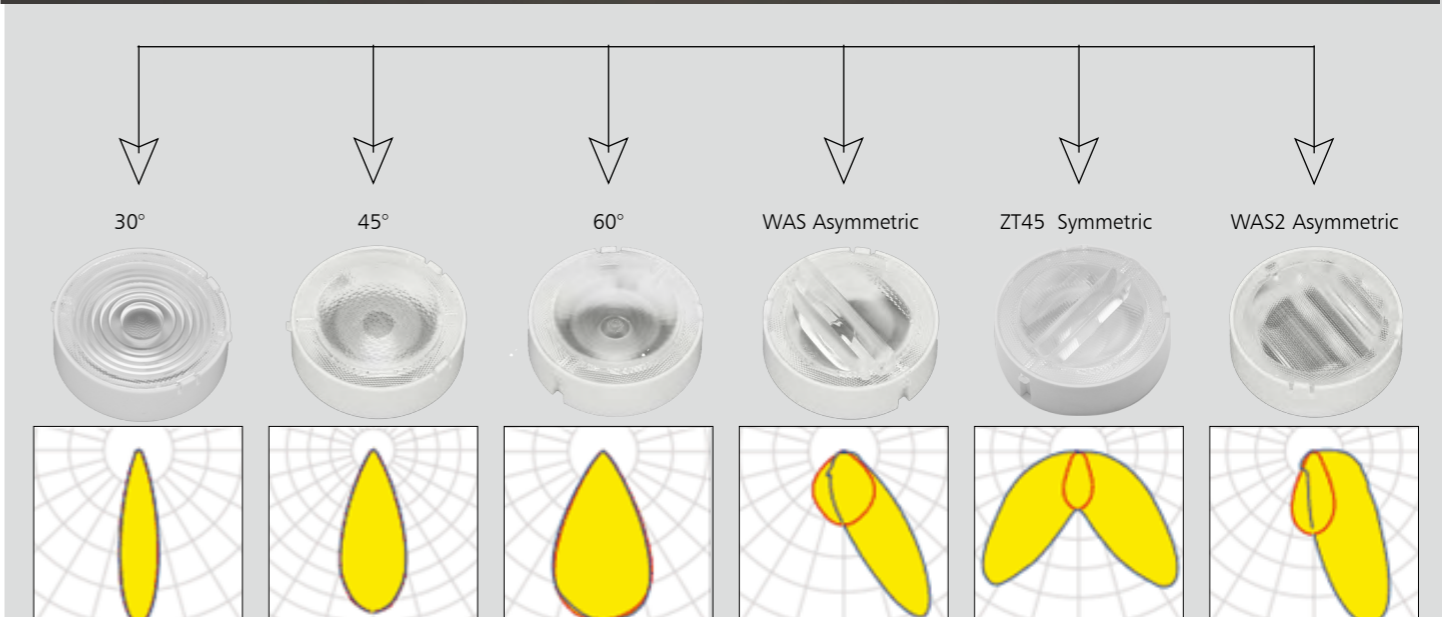
WAS2 Asymmetric

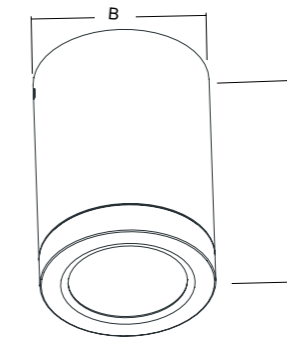


30°

45°

60°





## Technical Data Sheet

Code No.	DL277C - 6W	DL277C - 10W		
Dimension(mm)	Ø70xH102mm			
Cutout (mm)	-			
Watt(W)	6W	10W		
Rated Input Voltage(V)	AC230V			
Input Voltage(V)	AC220-240V			
LED Module Input	-			
Light Source	COB			
SDCM	≤6			
CCT(K)	1-CCT: 2700K/3000K/4000K/5000K			
CCT Selection DIP Switch	NO			
Luminous Flux (lm) ±5%	Non-DIM	1-CCT	600-660	930-1000
	DIM	1-CCT	594-657	950-1000
	Non-DIM	3-CCT	-	-
	DIM	3-CCT	-	-
CRI	Ra>80 (Ra>90 Optional )			
Beam Angle (°)	30° / 45° / 60° / WAS / WAS2 / ZT45			
UGR	-			
LED Driver	Built-in			
Dimming Option	Triac			
Sensor	NO			
Emergency Kits	NO			
Electrical Class	Class I			
Ingress Protection (IP Rating)	IP20			
Impact Resistance (IK Rating)	-			
Product Finishing(Base)	White RAL 9016 / Black RAL 9005			
Materials of Optics	PMMA			
Materials of Housing	Aluminum+PMMA			
Lifetime (hr)	50,000h			
Glow wire test (°C )	650°C			
Operating Temp. (°C )	-20°C ~40°C			
Storage Temp. (°C )	-20°C ~65°C			
Installation	Surface mount			

Code	Dimension(mm)		Size(mm)	Product Weight (Kg)		Package weight (Kg)		Carton Size(cm)	Qty/CTN	20GP (pcs)	40HQ (pcs)
	A	B		N.W/PC	G.W/PC	N.W/CTN	G.W/CTN				
DL277C-6W	102	70	102xØ70	0.33	0.33	9.6	10.2	48.5*25*32.5	24PCS	17376	41472
DL277C-10W	102	70	102xØ70	0.33	0.33	9.6	10.2	48.5*25*32.5	24PCS	17376	41472

## Driver Datasheet (Non-dimmable )

Total load wattage		6W	10W
Output	Output Voltage range	DC30-40V	
	Rated output current	140mA	230mA
	Line Regulation	±5%	
	Setup, Rise Time	<0.5S	
	Flickering Index	1%,IEEE1789 NO RISK	
Input	Input Voltage	AC180-265V	
	Rated Input Voltage(V)	AC200-240V	
	Frequency	50/60Hz	
	Input Current	≤0.04A	≤0.07A
	Rated Input Current	≤0.04A	≤0.06A
	Power Factor	PF > 0.9	
	THD	<20%@230V	<20%
	Efficiency	≥80%	
	No load wattage	<1W	
Protection	Short circuit protection	PASS	
	Over voltage protection	PASS	
	Over temperature protection	PASS	
Safety &EMC	Withstand voltage	I/P-FG:1.5KVac, <5mA 60S	I/P-FG:1.5KVac, <5mA 60S; I/P:3.75KVac,
	Isolation Resistance	/	
	Surge	IEC/EN61000-4-5( P<25W; L-N:500V, L/N-PE:1KV);	
	EMC Emission	EN55015, EN61000-3-2	
EMC Immunity	EN61000-4-2,3,4,5,6,8,11; EN61547		

# Driver Datasheet (Triac Dimmable )

Total load wattage		6W	10W
Output	Output Voltage range	DC30-40V	
	Rated output current	130mA	220mA
	Line Regulation	±5%	
	Setup, Rise Time	≤1S	
	Flickering Index	5.5%(LOW RISK)	<10%
Input	Input Voltage	200-240V	
	Rated Input Voltage(V)	230V	
	Frequency	50Hz	
	Input Current	≤0.04A	≤0.06A
	Rated Input Current	≤0.03A	≤0.05A
	Power Factor	0.9	
	THD	-	
	Efficiency	≥78%	
	No load wattage	<1W	
	Protection	Short circuit protection	Pass
Over voltage protection		Pass	
Over temperature protection		Pass	
Safety &EMC	Withstand voltage	I/P-FG:1.6KVac,<5mA 60S; O/P-FG:0.5KVac,<5mA 60S	
	Isolation Resistance	-	
	Surge	EC/EN61000-4-5( P<25W; L-N:500V, L/N-PE:1KV);	
	EMC Emission	EN55015, EN61000-3-2	
	EMC Immunity	EN61000-4-2,3,4,5,6,8,11; EN61547	

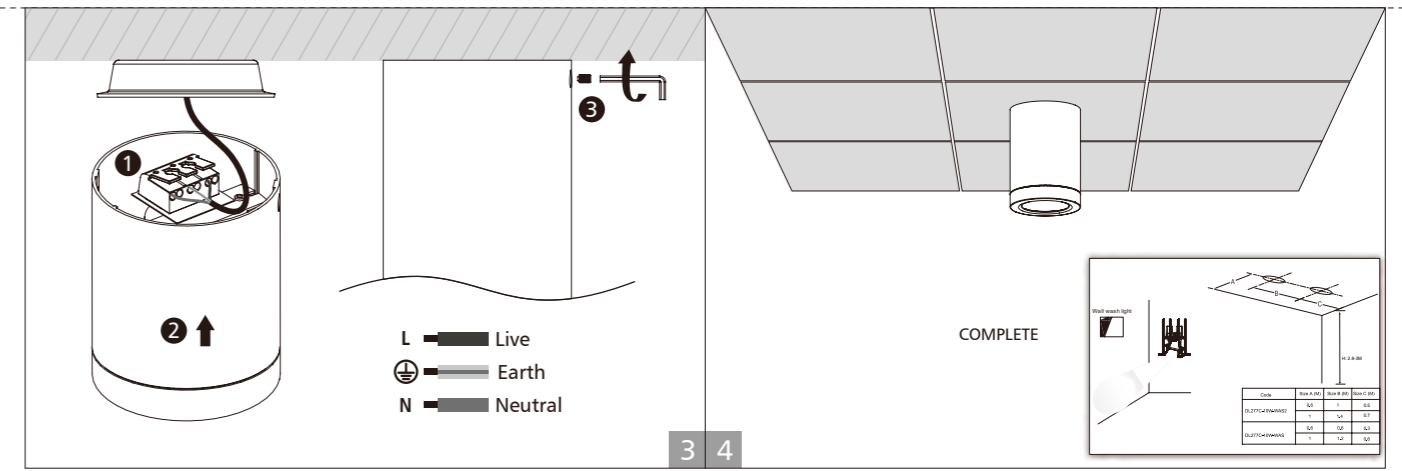
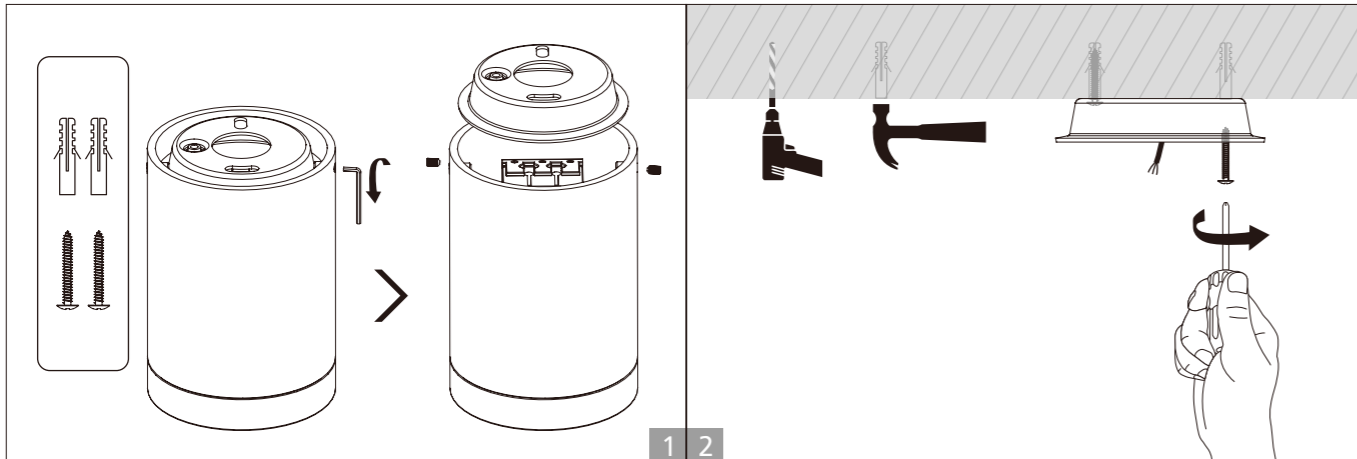
## Installation Procedure

### WARNING

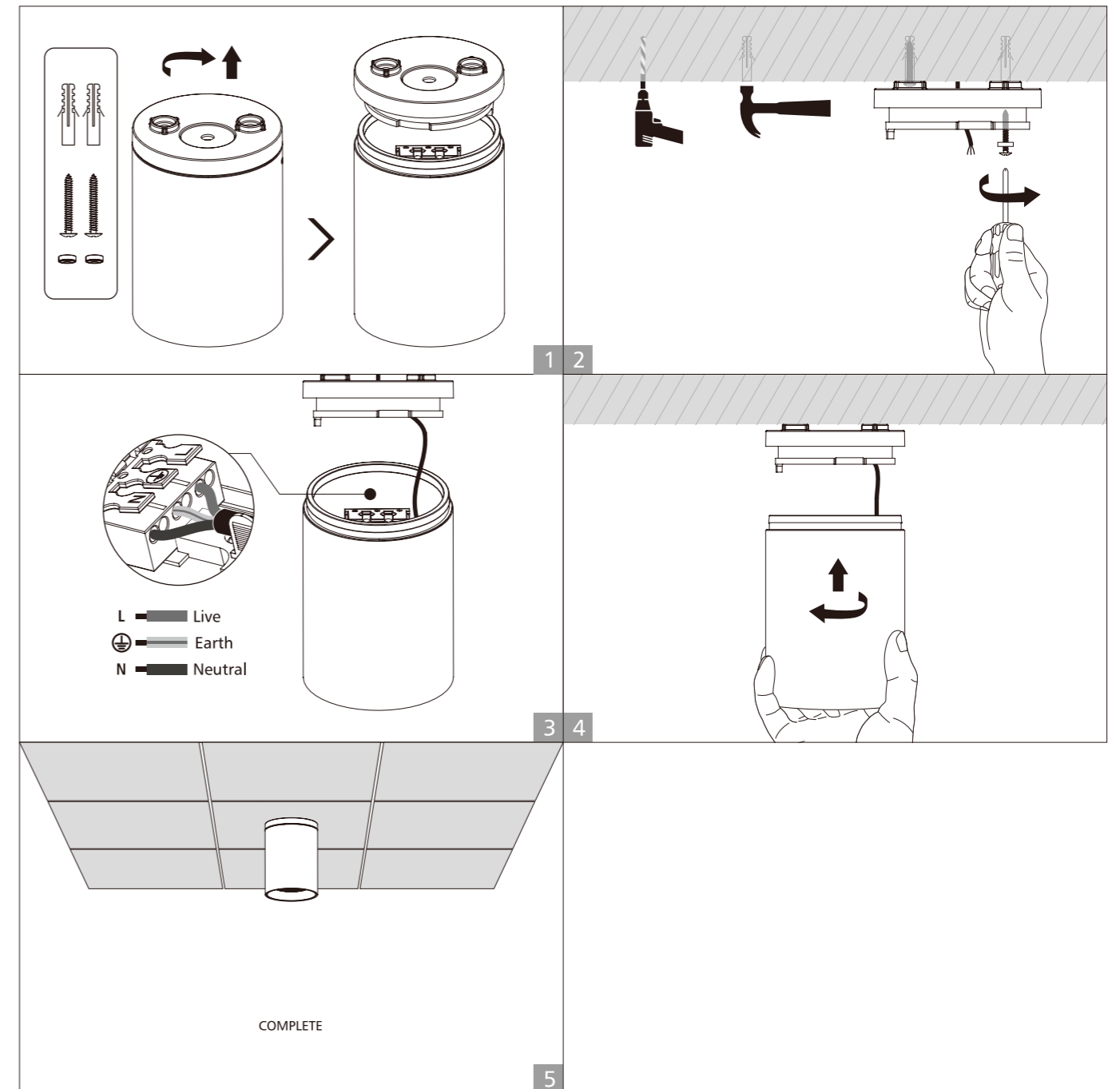
- 1.Switch off power supply before installation / maintenance.
- 2.Switch on only after complete installation and examination of the circuit.
- 3.Professional electrician for installation and maintenance only.



## Screw surface mounted installation



## Rotating surface mounted installation



**ECO**  
Specifications

**STD**  
Specifications

**PRO**  
Specifications

**ODM**  
Specifications

  
**INT**  
Intelligent