

HD / ST03

Professional Roadway Lighting

Basic Information

Type: (ST03, ST08 & ST18) LED Streetlight

Wattage: 15W, 20W, 30W, 50W, 70W, 90W, 120W, 150W

130
LM/W





- Accept ANSI standard dimmable photocells to provide a connection between the photocell and the luminaire.
- Available with two or four dimming contacts to support one or two channel dimming protocols.
- Various NEMA socket available: 3pin, 5pin, 7pin

Photometric Diagrams



(Type II, Type III)R17601
(Type II, Type III)R09603



(Type II)R17602
(Type II)R09601



(Type II)R17603
(Type II)R09602



(Type II)R17604



(Type V)R17605



(Type I) R17608
(Type I) R09604



(Type II)R05002

IP66

DALI
PHOTOCELL
TIMMER CONTROL
SOLAR OPTIONAL



ST03

ST08

ST18

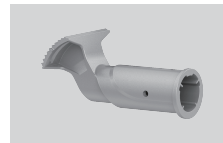
Outlook Dimensions:

ST03: 763x352x225mm

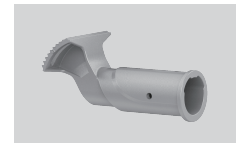
ST08: 680x282x160mm

ST18: 466x222x109mm

Mounting Bracket



diameter: 34mm/1.3386"



diameter: 42mm/1.6535"



diameter: 60mm/2.3622"



diameter: 76mm/2.9921"

